

Powder Show™ introductions

The 2018 Southeast Powder Show™ & Conference, presented by *Powder and Bulk Engineering*, is the only regional trade show exclusively devoted to dry bulk solids processing and handling. The conference will be held September 25-27 at the Charlotte Convention Center in Charlotte, NC, and will feature 15 half-day workshops over 2 ½ days led by industry experts and two free 45-minute seminars for attendees interested in learning about dust explosivity and pneumatic conveying basics.

The exposition will run September 26-27 and will feature bulk solids equipment and services exhibitors. The equipment descriptions that follow provide a preview of the products suppliers will introduce or exhibit at the Powder Show™. The information in this section is supplied by the exhibitors; no endorsement is intended. We've also included company contact information. To get more information before or after the show, contact the companies directly. A full list of exhibitors and a map of the exhibit hall is available on page 51. For more information, visit pbepowdershow.com.

We invite you to stop at PBE's booth #619. You can tell us what you think of the magazine and what you'd like to see covered in upcoming issues.

Dust Collector

Vertical cartridge filter (VCF) dust collector removes medium to high volumes of industrial dust. Unit comes equipped with time- and cost-saving features, including an easy-to-use cartridge clamp system that simplifies filter media replacement. Unit's filter has a smart timer with an onboard sensor for reading the pressure drop across the filtering elements for on-demand cleaning, resulting in reduced compressed-air consumption and longer cartridge life. Unit's optional high air volume inlet with a pre-separation chamber is for high-volume systems, and the chamber separates the largest powder particles, safeguarding the media from excess dust loads for a longer filter media life. Unit is constructed with reinforced carbon steel rated for 6.5 psi P_{red} validated through a full-scale third-party explosion test.



Booth 611

Schenck Process, Whitewater, WI

800-558-0184

www.schenckprocess.com

Industrial Fan

Supplier manufactures pre-engineered and custom industrial fans and blowers. Company's line of fan equipment is known for its high-quality, robust construction. Company designs and builds low-maintenance, durable equipment for long-term service.



Booth 202

Industrial Air Products,

715-339-3024

www.iapfan.com

Bulk Storage Silos

Bulk storage silos are one-piece, shop-welded units and will comply with the latest OSHA requirements for ladder climb sleeves, which go into effect in November 2018. Compliant silos will feature the supplier's proprietary integrated ladder design. Silos are for applications that include the storage of chemicals, plastics, food ingredients, and more. Silos are fabricated to meet the needs of various industries and applications with one-piece construction, ASME certification, OEM component installation, specialized linings and coatings, and more.



Booth 401

Imperial Industries, Rothschild, WI

800-558-2945

www.imperialind.com

PBE Powder Show™ intros



Compact Dust Collector

Compact dust collector is for direct mounting to bins, drag conveyors, and other equipment where access or mounting options for dust collection are limited. Unit features an integrated fan and cleaning system designed for simple installation, operation, and maintenance in applications with a wide range of materials and air volumes. Unit has a tool-free cartridge-replacement feature, minimizing maintenance and downtime. Unit is available in carbon steel or stainless steel to meet specific application requirements.



Booth 419

Kice Industries, Wichita, KS

316-744-7151

www.kice.com

Single-Use Biopharmaceutical Packaging System

EZ BioPac single-use powder containment and transfer system is a biopharmaceutical packaging system that allows companies producing powder-form biologics to easily transport products. System is engineered to allow workers to quickly and easily add specific amounts of powder to the system's bag and adjust the contents to a precise target weight. System has a separate discharge outlet and antistatic polymer material for faster, cleaner discharge with residuals of 2 grams or less in a 5-kilogram bag. System's bag has a unique design and protective skirt to reduce or eliminate contamination of the support stand and bag exterior, drastically reducing cleanup requirements.



Booth 604

ILC Dover, Frederica, DE

302-335-3911

www.ilcdover.com

Explosion Vent

Q-Ball explosion vent uses a contour parallel venting principle to promote maximum explosion venting effectiveness while minimizing the required venting area. Vent is primarily designed for bucket elevators and screeners. Vent is available in four sizes, and unit's replaced outer frame profiles make it extremely lightweight. Vent includes integrated signaling for easy monitoring and features an explosion-proof housing that remains stable during extreme dynamic explosions, cooling down 5,400°F flames within 500 milliseconds. Vent doesn't require proximity to an external wall, allowing more installation options. Vent's optional cover protects the unit from water and dust indoors and outdoors. Unit allows easy retrofitting of existing vent panel installations.



Booth 305

Rembe, Charlotte, NC

704-716-7022

www.rembe.us

Sanitary Butterfly Valve

Cora CV-V sanitary butterfly valve now has a pneumatic linear vibrator to promote material flow. Valve provides fine food-grade pharmaceutical powder discharge from an intermediate bulk container, blender, or other container type, preventing bridging and flow stoppages. Valve reduces powder adhesion and increases reliable flow by employing the effects of variable-frequency vibrations. Valve is supplied with a pneumatic positioner that allows the disc to be opened to any position for discharge control. Valve is designed with a slender profile, resulting in weight and space savings, can be attached and detached by a sanitary clamp band, and meets stringent FDA and USDA requirements. Valve is available in 3-, 4-, 6-, 8-, 10-, 12-, 14-, and 16-inch sizes.



Booth 218

Key International, Cranbury, NJ

609-619-3685

www.keyinternational.com



PBE Powder Show™ intros

Toll Processing Services

Company offers toll blending and repackaging services. The company has flexible blending options in ribbon or double cone blenders. The company can package materials in valve or open-top bags, drums, boxes, gaylords, super sacks, and bulk bags. The company is ISO 9001:2008-certified, and its flexible packaging options provide efficiency for customers. The company can also provide grinding services.



Booth 318

PhilChem div. Mount Vernon Chemicals, Greer, SC

864-848-9811

www.philchem.us

Ducting Components

Quick-Fit ductwork components have a rolled edge on the ends, which provides easy connection to other components using a barrel-type clamp. Components' specially designed gasket inside the clamp seals the joint tightly without any special tools, cutting installation and downtime by more than 45 percent compared to a flanged ductwork installation. Components include a telescoping adjustable nipple to eliminate precise measurements. Components are suitable for various applications, including dust collection and fine particulate transfer and can be uninstalled and relocated as work areas change. Components feature smooth, fully welded seams to prevent leaks, snags, and possible "bug harbors."



Booth 219

Nordfab, Thomasville, NC

800-532-0830

www.nordfab.com

Vacuum Pneumatic Conveying System

3500 series vacuum pneumatic conveying system transfers powders and granular bulk solid materials to process vessels and packaging lines for many industries, including the food, pharmaceutical, chemical, nonwovens, and plastics industries. System offers processors a plug-and-play solution for conveying rates up to 3,500 pounds per hour in either a general-purpose or sanitary design. System includes five parts: a pick-up wand, conveying hose, vacuum receiver with automatic pulse-filter cleaning, vacuum producer, and UL-listed controls.



Booth 201

Vac-U-Max, Belleville, NJ

800-822-8629

www.vac-u-max.com

Lump Breaker

Lump breaker offers a simple, rugged means of reducing natural agglomerations formed in dry bulk solid materials. Unit uses gentle impact and shear forces to reduce materials to their original, free-flowing form without making them finer. Unit's standard features include replaceable rotating and fixed blades; outboard-mounted, maintenance-free bearings; dust-tight shaft seals; and a compact, welded body with flange connections for fitting in a wide range of spaces. Unit is available in several sizes and materials of construction, including quick-clean models with linear rails, rectangular versions for use at the end of belted processes, and custom designs to suit various applications in the food, baking, chemical, petrochemical, and pharmaceutical industries. Unit's design makes maintenance easy and its sanitary construction makes the unit for applications requiring thorough cleaning.



Booth 111

Prater Industries, div. Industrial Magnetics, Bolingbrook, IL

800-799-1902

www.praterindustries.com

PBE Powder Show™ intros



Particle Analyzer

LS 13 320 XR laser diffraction particle analyzer meets quality control and research application demands in the pharmaceutical and industrial sectors. Analyzer delivers fast, accurate, and reproducible high-resolution measurement and analysis, eliminating complex procedure setups and reducing the time required to process dry or liquid samples. Analyzer uses polarization intensity differential scattering (PIDS) technology to analyze material at multiple wavelengths and polarities to deliver a highly accurate picture of the sample material. It can detect multiple peaks within a heterogeneous sample and measure particle sizes from 10 nanometers to 3,000 microns.



Booth 404

Beckman Coulter, Brea, CA

714-993-5321

www.beckman.com

Industrial Fabrication Services

Company is expanding its fabrication capabilities to better serve customers with fabricated piping, chutes, hoppers, access platforms, and other items needed for specialized manufacturing. Company offers



large-scale equipment design and installation or custom-tailored industrial fabrication projects. Company has a strong background in industrial construction and has demonstrated comprehensive knowledge of all aspects of facility and equipment fabrication, either for new equipment installation or remodeling.

Booth 312

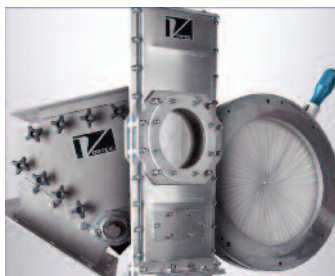
SEFA Industrial Solutions, Lexington, SC

844-584-0132

www.sefagroup.com

Valves

Quantum series valves are used by manufacturers to handle nonabrasive and moderately abrasive powders, pellets, and granules. Valves are used to shut off, meter, and divert dry bulk solid materials in gravity-flow or pneumatic (dilute- or dense-phase; pressure or vacuum) conveying applications. Valves are designed to compensate for wear, require minimal spare parts, provide easy inline maintenance, improve process efficiencies, establish long-term reliability, improve workplace safety, ensure dust-free environments, and prolong service life. Valves are used in various industries, including agriculture, chemicals, foods, milling, pet foods, pharmaceuticals, plastics, rubber, wood, among others.



Booth 610

Vortex, Salina, KS

888-829-7821

www.vortexglobal.com

Integrated Plant-Wide System

Integrated plant-wide system can be custom-engineered using components from the supplier's individual equipment, including automated systems that source bulk solid materials from interior



and exterior plant locations; equipment to transport material between process equipment and storage vessels; material weighing, blending, and feeding equipment; packaging lines; extruders and molding machines; storage vessels; and material loadout equipment for railcars and trailers. System's equipment can be constructed from carbon steel with durable industrial finishes or stainless steel to industrial, food, dairy, or pharmaceutical standards.

Booth 101

Flexicon, Bethlehem, PA

610-814-2400

www.flexicon.com



PBE Powder Show™ intros

Spark Detector and Extinguisher System

Spark detector and extinguisher system is used when drying, hammermilling, shredding, granulating, and pelletizing bulk solid materials, as these actions can create hazards such as sparks and embers. System is a cost-effective preventive method, which detects these hazards and activates countermeasures before they cause fires or explosions. System is Factory Mutual Approved and can reduce the risk of fire and dust explosion in material transport and dust collection systems as outlined in NFPA 69, NFPA 654, and NFPA 664 Standards.



Booth 311

Fagus GreCon, Charlotte, NC

704-912-0000

www.grecon.com

Storage Silo

Dry bulk storage silos can be custom-engineered to exact project requirements. Silo is factory epoxy powder coated and flat panel bolted for performance, reliability, and ease of installation. Silos are erected from ground level with a synchronized jacking system, improving safety and quality control around ground level. Silo construction system eliminates expensive cranes and fabricated scaffold systems and improves the supplier's ability to work in confined spaces. Silo's panels are finished in-factory with a thermal fusion-bonded powder coating.



Booth 419

Tarsco Bolted Tank, a TF Warren Co., Goodman, MO

866-700-2500

www.tfwarren.com

Sanitary Fittings

KOA Sanitary Fittings are a line of high-quality, hygienically designed hose fittings, clamps, gaskets, and accessories for use in the food, beverage, dairy, cosmetics, and pharmaceutical industries. Fittings are certified to meet the 3-A Sanitary Standard for each fitting type and are individually bubble and shrink-wrapped for protection.



Booth 411

Kuriyama of America, Schaumburg, IL

847-755-0360

www.kuriyama.com

Explosion Detector System

SmartDS dynamic explosion detector system is designed for process applications requiring rate-of-rise explosion pressure sensing. Unit has a unique ability to analyze pressure rise and differentiate it from non-explosion pressure to provide maximum protection with minimal false alarms.



Booth 211

IEP Technologies, Marlborough, MA

855-793-8407

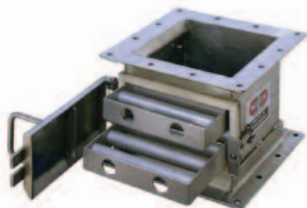
www.ieptechnologies.com

PBE Powder Show™ intros



Drawer Magnet

Manual-clean drawer magnet is engineered to remove medium and fine ferrous contaminants from dry, free-flowing materials under gravity flow. Unit protects processing machinery and improves product purity. Unit's multiple staggered rows of magnet tubes provide maximum contact area for material flow. Unit pulls ferrous contaminants to the magnet's surface where they move to the underside of the tube to prevent washoff.



Booth 419

Puritan Magnetics, Oxford, MI

800-787-3624

www.puritanmagnetics.com

Storage Tank

TecTank FP jackable flat-panel bolted storage tank for dry bulk solids was designed based on the supplier's previous tanks. Storage tank shown is one of more than 350,000 tanks in 125 countries performing in thousands of applications. Storage tanks can be safely and economically installed on diverse sites.



Booth 304

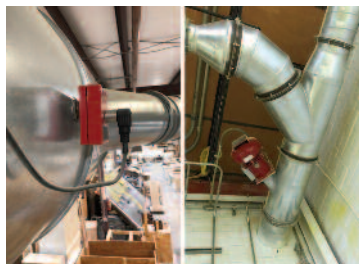
CST Industries, Kansas City, MO

844-448-2657

www.cstindustries.com

Explosion and Fire Prevention Products and Services

Company provides explosion and fire prevention products and services for industries involved in processing, handling, and packaging materials with unique fire and explosion protection concerns.



Company specializes in solutions that reduce the risk of fire, explosions, property damage, and production downtime. Company provides explosion protection (prevention and mitigation) as well as spark detection, fire suppression, and other equipment. Company designs, fabricates, installs, and maintains complete fire protection systems.

Booth 412

Century Fire Protection, Duluth, GA

770-945-2330

www.centuryfp.com

Material Handling Equipment Engineering

Company provides a full line of material handling equipment that is custom-engineered to meet specific application needs, including structural steel-trussed, structural steel-channel, and enclosed-frame belt conveyors, bucket elevators, corrugated-sidewall belt conveyors, chain conveyors, and distributors. Company has the knowledge and experience to properly design an engineered solution that a project requires, including the material handling equipment itself, structural steel support bents, towers, service platforms, stairs, ladders, and interconnecting chute work. Company's approach greatly reduces the amount of coordination between multiple suppliers, helps ensure a seamless installation, and yields long-term reliability.



Booth 419

Rapat, Hawley, MN

800-325-6377

www.rapat.com

Powder Show™ Exhibitors

The following suppliers will display their powder and bulk solids processing and handling equipment and services at the 2018 Southeast Powder Show™ & Conference. This list of suppliers and booth numbers is current as of July 15. Suppliers advertising in this issue are listed in **bold**.

A

ABC Polymer Industries	505
Auburn FilterSense	113

B

Beckman Coulter	404
-----------------	-----

C

Century Fire Protection	412
CST Industries	304
CV Technology	410

F

Flexicon	101
----------	-----

G

GreCon	311
--------	-----

H

Herding Filtration	504
--------------------	-----

I

Industrial Air Products	202
-------------------------	-----

IEP Technologies	211
------------------	-----

ILC Dover	604
-----------	-----

Imperial Industries	401
---------------------	-----

J

Jenike & Johanson	205
-------------------	-----

JohnPac	302
---------	-----

K

Kesco	419
-------	-----

Key International	218
-------------------	-----

Kice Industries	419
-----------------	-----

Komline-Sanderson	213
-------------------	-----

K.R. Komarek Koepfern	413
-----------------------	-----

Kuriyama of America	411
---------------------	-----

KWS Manufacturing	203
-------------------	-----

L

Latta Equipment	313
-----------------	-----

M

Menardi Filters	511
-----------------	-----

Microtrac	319
-----------	-----

N

Nederman Mikropul	210
-------------------	-----

Nordfab Ducting	219
-----------------	-----

P

PhilChem	318
----------	-----

<i>Powder and Bulk Engineering Magazine</i>	619
---	-----

Prater Industries	111
-------------------	-----

Progressive Products	400
----------------------	-----

Puritan Magnetics	419
-------------------	-----

R

Rapat	419
-------	-----

Rembe	305
-------	-----

Rotolok Valves	510
----------------	-----

Russell Finex	204
---------------	-----

S

Schenck Process	611
-----------------	-----

Schust Standard Products	405
--------------------------	-----

SEFA Industrial Solutions	312
---------------------------	-----

Smico – A&J Mixing	301
--------------------	-----

Sunbelt Packaging	403
-------------------	-----

T

Thomas & Muller Systems	310
-------------------------	-----

Tarsco Bolted Tank	419
--------------------	-----

V

Vac-U-Max	201
-----------	-----

Vortex	610
--------	-----

September 25 – 27, 2018
Charlotte, North Carolina



THE POWDER SHOW™

presented by
Powder and Bulk Engineering



Entrance

Hall A