

Powder and Bulk Engineering

June 2017
Volume 31 Number 6
www.powderbulk.com

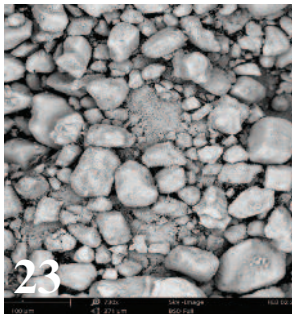
On the cover: Model Twin LP Delumper twin-shaft crusher processes granular potash in Saskatchewan, Canada, breaking large potash agglomerates to a 1-inch output size. Crusher features individually replaceable, bidirectional cutter teeth, which are carefully stacked, balanced, and arranged on two shafts for optimal feeding. Crusher's teeth rotate through a heavy bar grating, which creates a low-friction, self-clearing crushing action. Crusher can size-reduce dry, sticky, caked, or wet solids without overworking, churning, or heating the material. Courtesy of Franklin Miller, Livingston, NJ, 800-932-0599 (www.franklinmiller.com).

INDUSTRY PERSPECTIVE

8 Equipment procurement: Pay now or pay later

Richard J. Farnish

SIZE REDUCTION



23 Using particle analysis to optimize agitator bead mill performance

Kevin Kirkwood

26 Product summary

56 Suppliers' tips

Suppliers discuss how to improve size reduction equipment throughput.

GENERAL FEATURES



18 Agglomeration Advisor

Guest columnist William H. Engelleitner answers some commonly asked questions about handling green agglomerates.

31 Comparing long-radius antiwear elbows for pneumatic conveying systems

Davide Papazzoni and Andrea Zucchelli

38 Case history: Monitoring resin levels

43 Air pollution control

Products and information to help you deal with dust and air pollution at your plant.

47 Trade show preview: Pack Expo Las Vegas 2017

DEPARTMENTS



9 Letters

10 Industry news

15 Markets update

17 Research notes

21 Special section:

Monitors

48 Calendar

48 Continuing education

50 What's new

50 Supplier notes

51 People news

52 Product news

54 Classified advertising

55 Advertiser index

Powder and Bulk Engineering (ISSN 0897-6627) is published monthly, twelve times a year by CSC Publishing Inc., 1155 Northland Drive, Saint Paul, MN 55120. Periodical postage paid at Saint Paul, MN and additional mailing offices. POSTMASTER: Send address changes to: Powder and Bulk Engineering, 1155 Northland Drive, Saint Paul, MN 55120.